

EN: Ceiling lamp. Opal diffuser made of two layers of blown glass. Metallic coated structure.

IT: Lampada da soffitto Diffusore in vetro opale soffiato incamiciato. Struttura in metallo verniciato.



CERTIFICATIONS / CERTIFICAZIONI



Product in class I
Apparecchio di classe I

IP20

Product for indoor use
Apparecchio per uso interno



Product in conformity with the European directive
Apparecchio conforme alla direttiva europea

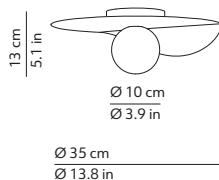


This lamp must be disposed in conformity with the EU directive
Apparecchio di illuminazione da smaltire secondo la direttiva

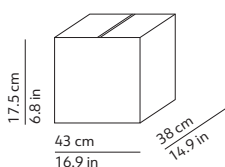
CODES AND DIMENSIONS / CODICI E DIMENSIONI

FLOW CEILING

506429N / US



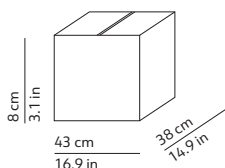
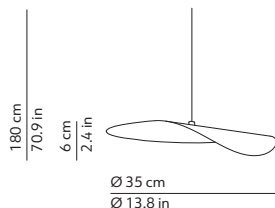
PACKAGING / IMBALLO



Volume: 0.03 m³ / 1.059 ft³
Gross weight: 2.5 kg / 5.51 lbs

LEAF

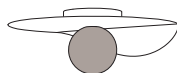
506430N / US



Volume: 0.01 m³ / 0.353 ft³
Gross weight: 1.62 kg / 3.57 lbs

MATERIALS AND FINISHINGS / MATERIALI E FINITURE

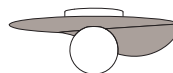
DIFFUSER / DIFFUSORE



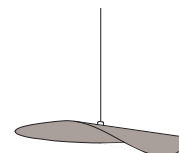
White / Bianco

Opal diffuser made of two layers
of blown glass
Diffusore in vetro opale
soffiato incamiciato

STRUCTURE / STRUTTURA



Metallic coated structure
Struttura in metallo verniciato



FURTHER INFORMATION / INFORMAZIONI AGGIUNTIVE

230V or 120V Feeding / Alimentazione

Light source / Sorgente luminosa
1 x 25W max - G9

Dimmable / Dimmerabile
Yes



Ceiling lamp
Lampada a soffitto